



COMP/09/2017

## Plug in News.....

### The Know-how in Hermetic Feed-Throughs

More than 10 years ago , PLUG IN was established in order to allow access by the space industry to the brand new epoxy sealed feed-throughs . Within this period of time they have been selected by many major world class users such as : ESA , ISRO , Thales Alenia Space group , EADS - Astrium group , CNES , IAI group from Israel , IABG from Germany , TAI from Turkey , KAI from Korea , CONAE from Argentina , etc ... and are supplying a lot of leading thermo vacuum chambers manufacturers.

Plug in has supplied feed-throughs for a lot of applications including : D Sub ( ALL types and density ) , micro D , rectangular ( for flat cable or ARINC ) , circular connectors ( D38999 , Fisher , Lemo , Jaeger , Hirose , DIN , BND , Reynolds ) , coaxial connectors ( BNC , BNC SHV , N , TNC , SMA , K ) up to 40 Ghz , optical fiber ( multimode and monomode ) as well as with wires ( thermocouple , high voltage , power , optic fiber ) . Sealing have even be supplied with printed circuit boards , flex circuits and 1 kA large copper rods!

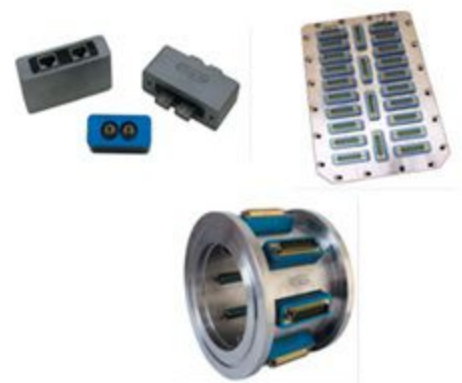


#### EVRAC Modular Feed through :

Plug in has original range of products ( ERVAC family ) based on a modular concept to fit the day to day requirements of the Labs : using a standard flange with special rectangular cut outs.

ERVAC modular Feed through is available with following connector types

D-Sub normal density, D Sub high density, Mixed layout D-Sub, Micro-D Thermocouples, BNC, BNO, TNC, SHV, MHV, SMA, SMB, SMC, PC3.5, N, K, RJ45, USB and Reynolds High Voltage.



#### MODULE-R Hermetic Feed-through Range

##### Unique of its kind for Mil-C-38999 and Mil-C-26482 connectors

EMI shielding – solid metal to metal coupling, grounding fingers, electroless nickle plating, and thicker wall sections provide superior EMI shielding capability of 65 dB minimum at 10 GHz.

- Contact Protection – recessed pins in this 100% scoop-proof connector minimize potential contact damage.
- Moisture Resistance – improved interfacial seal design helps prevent electrolytic erosion of contacts.
- Lockwiring Eliminated – unique, self locking, quick coupling connector eliminates lockwiring.
- Quick Coupling – completely mates and self-locks in a 360 Deg turn of the coupling nut.
- 18 Shell sizes, Nearly 100 different contact arrangements, 1 to 128 contacts, 5 contact sizes from 22 to 8.



Since 1907

### Jost's Engineering Company Limited